

Release Notes

Version 3.5.2 Software Introduces Repair-Source

Repair-Source is now available from your MAC Tools diagnostic tool to provide access to vehicle service and repair information in an easy to use format.

REPAIR-SOURCE GIVES YOU ACCESS TO VEHICLE SERVICE AND REPAIR INFORMATION INCLUDING:

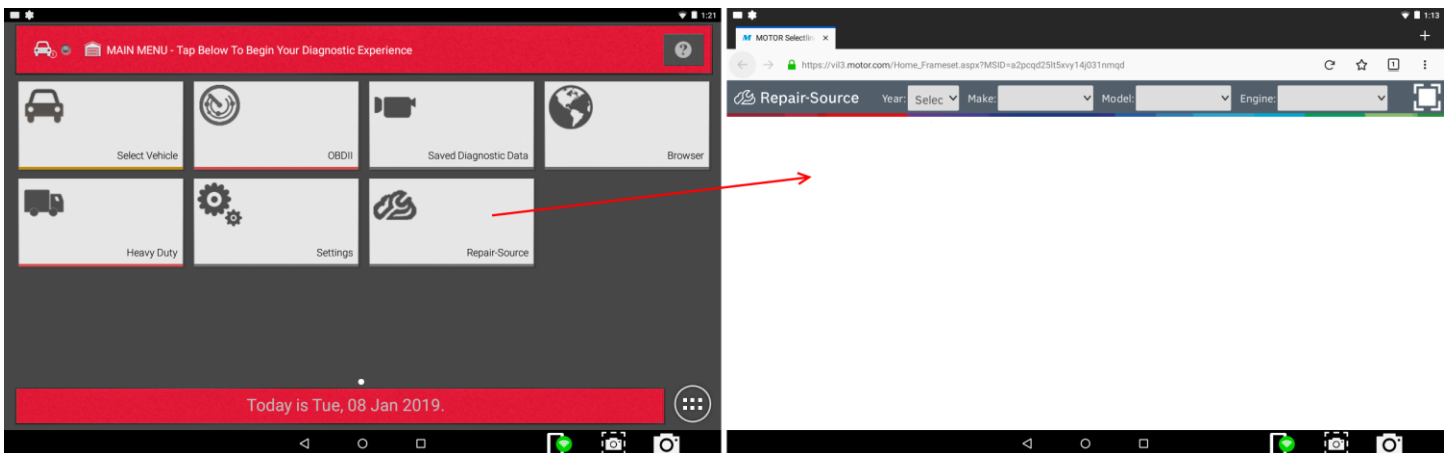
- **OEM Service Procedures:** AC/heater, engine, airbag, brake bleed, steering suspension, starter, alternator, timing belt
- **DTC Troubleshooting:** Test conditions and diagrams and supporting tests
- **Specifications:** AC system specs, brakes, capacities, quick lube, tune-up, and more
- **TSBs** (*Technical Service Bulletin*)
- **OE Wiring Diagrams**
- **Component Location Diagrams**
- **Torque Specifications**
- **Computer Relearn Procedures**
- **Maintenance Procedures and Schedules**
- **Labor Times**

There are three ways to access Repair-Source.

*Ensure your tool is connected to wifi as it's an online resource.

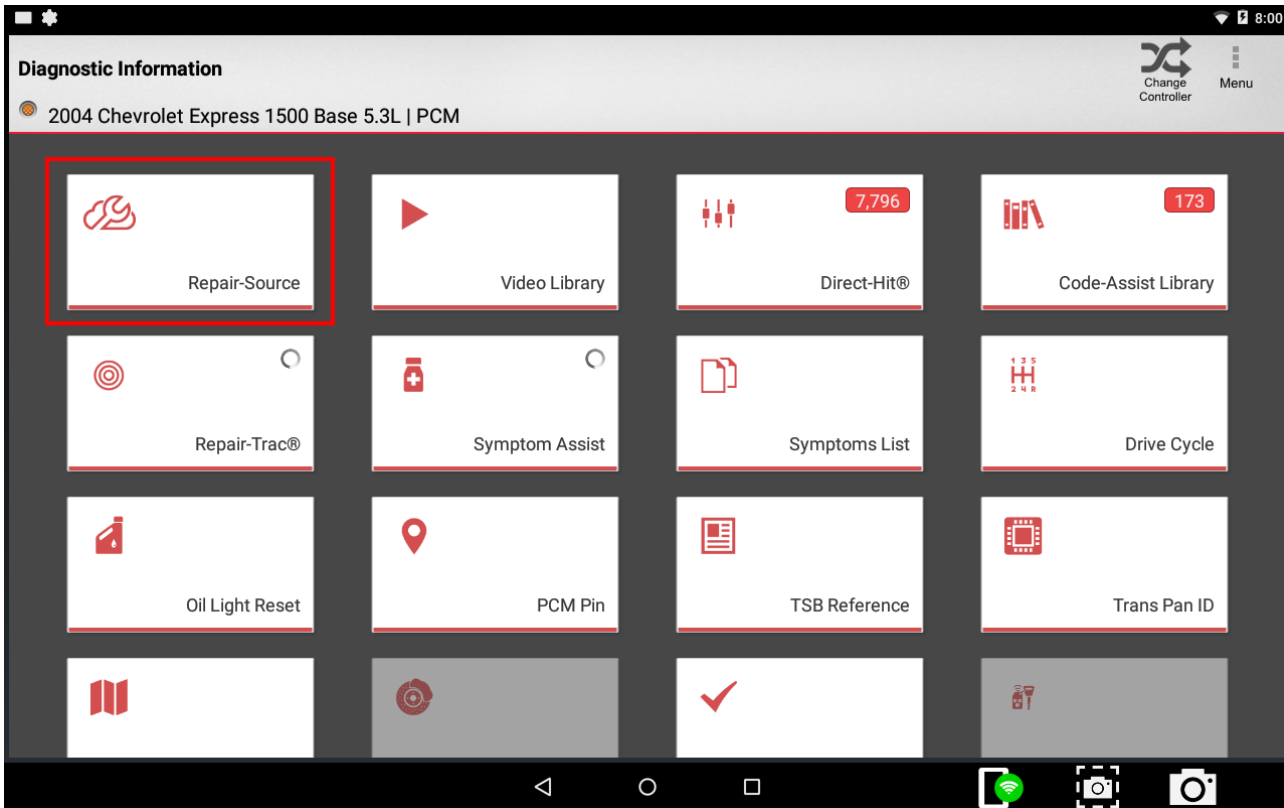
1) From MAIN MENU

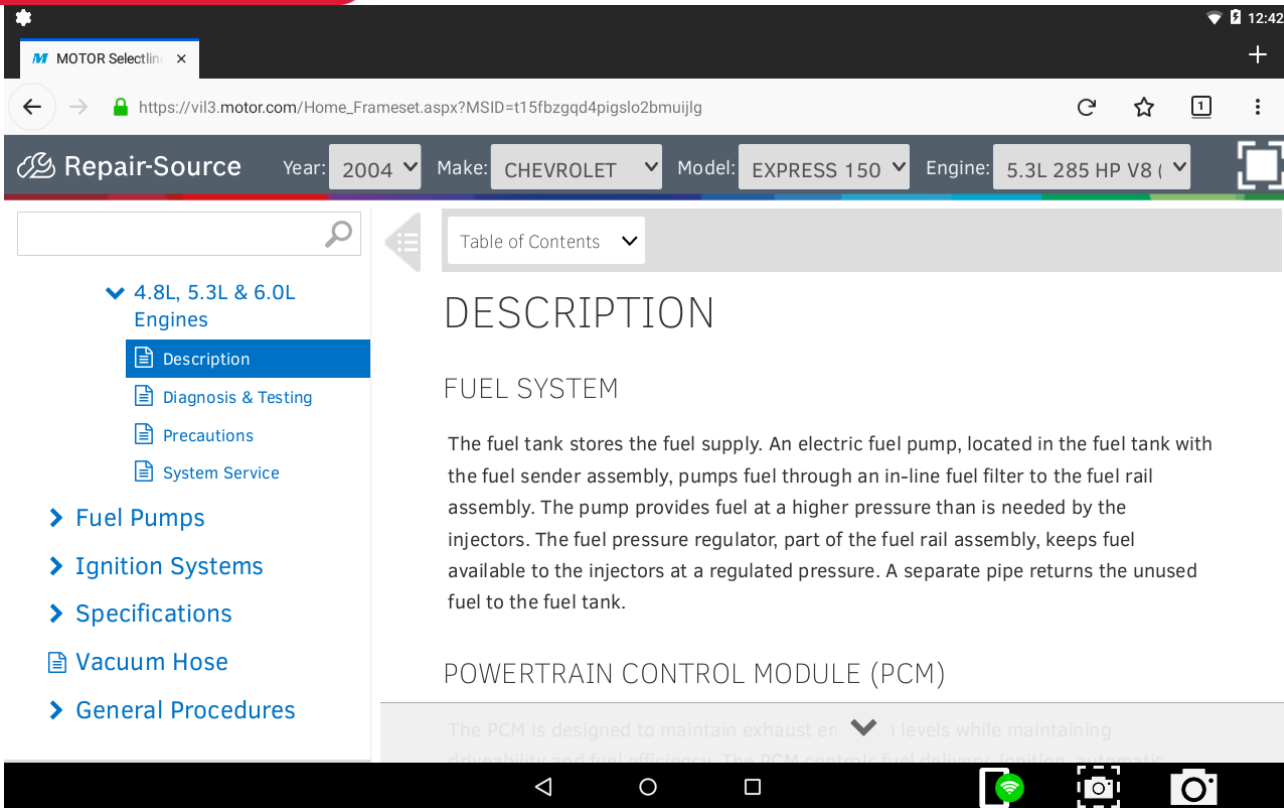
No Vehicle Selection Required! Select Repair-Source from the Main Menu for quick and easy access to all available information. Once connected, select the vehicle you want information on:



2) From Diagnostic Information Screen

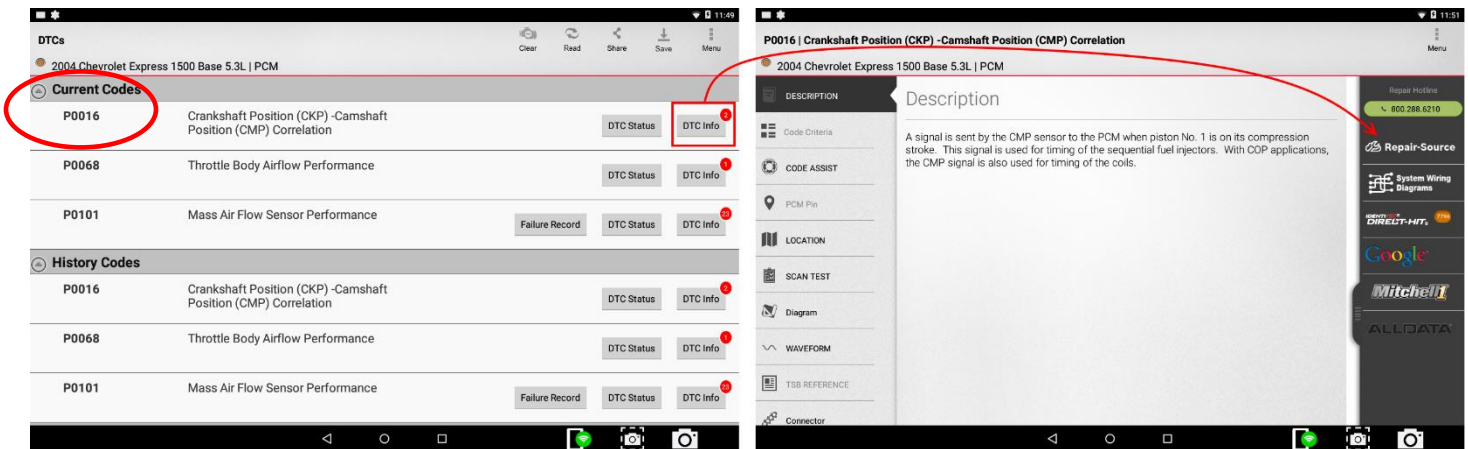
After selecting the Repair-Source tile your tool software will automatically load your vehicle selection to Repair-Source and you will be redirected to all of the Diagnostic Information assets that are available for that vehicle. View and select from the menu options on the left of the screen.





3) From DTC Information

After scanning your vehicle and viewing DTCs, Repair-Source Button is added to Online Resources tab.



After selecting the Repair-Source tile your tool software automatically loads your vehicle selection *and* DTC to Repair-Source and you will be redirected to DTC troubleshooting information available for that vehicle.

MOTOR Selectlin x

https://vil3.motor.com/Home_Frameset.aspx?MSID=t15fbzggd4pigslo2bmuijlg

Repair-Source Year: 2004 Make: CHEVROLET Model: EXPRESS 150 Engine: 5.3L 285 HP V8

P0016

- > Air Bags
- > Air Conditioning & Heater
- > Anti-Theft Keyless
- > Battery Replacement
- > Body
- > Brakes
- > Component Locations
- > Diagnostic Trouble Codes
- > Driveline
- > Electrical

1 result(s) for 'P0016'

Diagnostic Trouble Codes

Diagnostic Trouble Codes ▶ P0016 ▶ Crankshaft Position - Camshaft Position Not Plausible